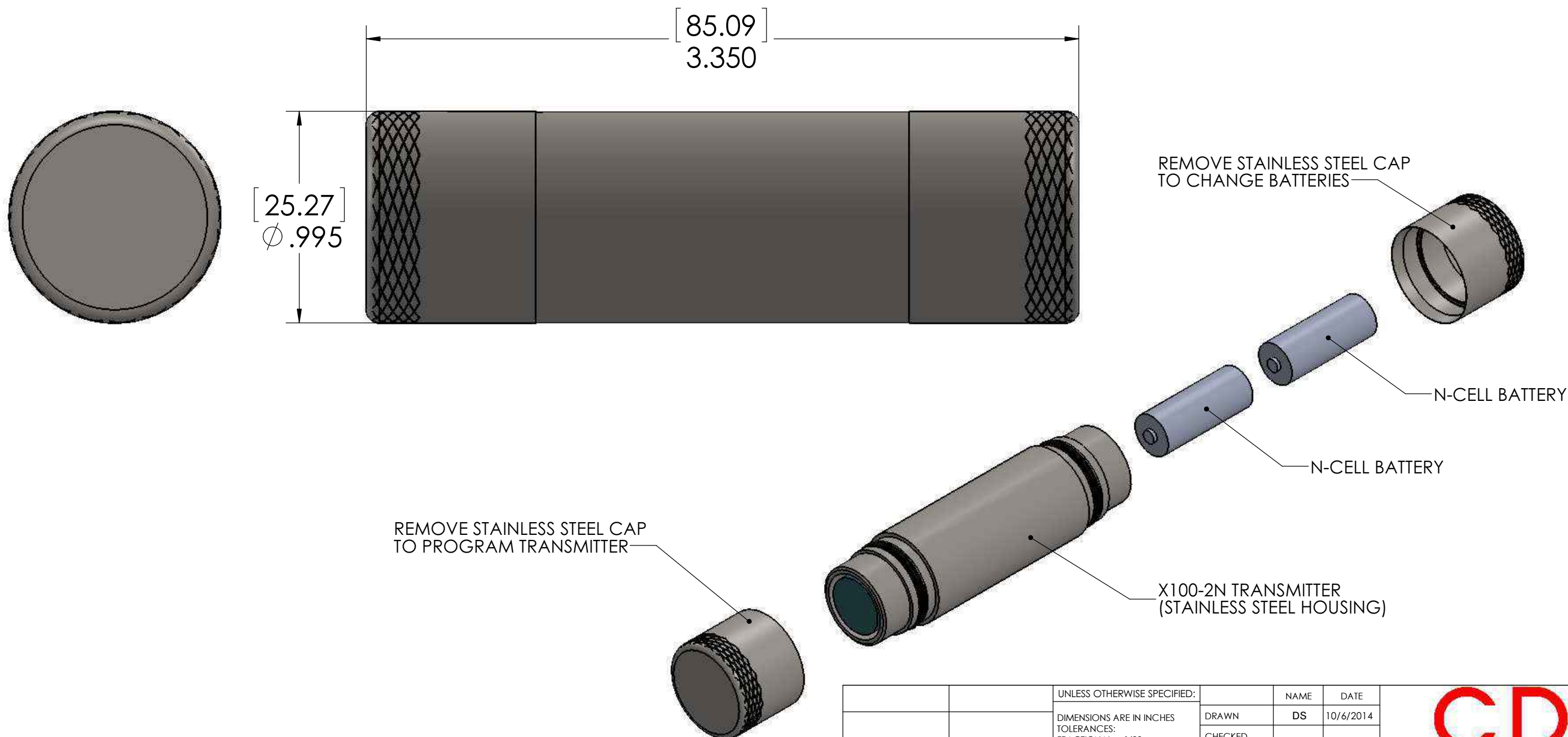


REV.	DESCRIPTION	DATE	APPROVED
A	RELEASE FOR PRODUCTION	10/6/2014	KRW



NOTE:
 1. DIMENSIONS ARE IN INCHES AND [MILLIMETERS]
 2. MAXIMUM OPERATING PRESSURE: 2500PSI

PROPRIETARY AND CONFIDENTIAL
 THE INFORMATION CONTAINED IN THIS DRAWING IS THE SOLE PROPERTY OF CDI. ANY REPRODUCTION IN PART OR AS A WHOLE WITHOUT THE WRITTEN PERMISSION OF CDI IS PROHIBITED.

UNLESS OTHERWISE SPECIFIED:		NAME	DATE	CDI		
DIMENSIONS ARE IN INCHES		DRAWN	DS		GENERAL ARRANGEMENT X100-2N TRANSMITTER	
TOLERANCES:		CHECKED				
FRACTIONAL ± 1/32		ENG APPR.				
ANGULAR: ± 2°		MFG APPR.				
TWO PLACE DECIMAL ± .03		Q.A.				
THREE PLACE DECIMAL ± .010		COMMENTS:		SIZE	DWG. NO.	REV
INTERPRET GEOMETRIC TOLERANCING PER: ASME Y14.5M - 1994				B	81-03-0061-00	A
MATERIAL				SCALE: 1:1	WEIGHT:	SHEET 1 OF 1
NEXT ASSY	USED ON					
APPLICATION		DO NOT SCALE DRAWING		ECN #:		

V:\X100\Mechanical models\2N\ 81-03-0061-00